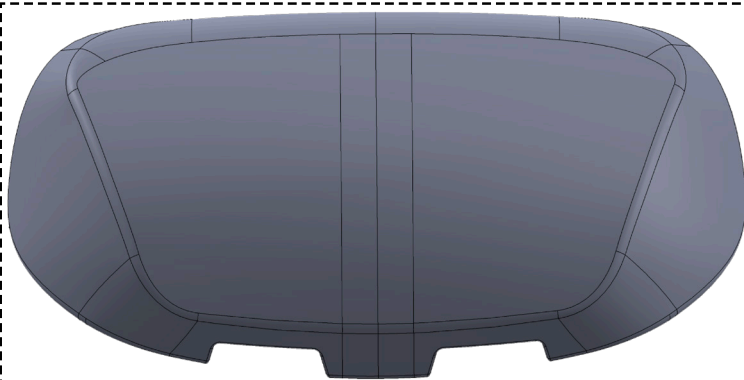


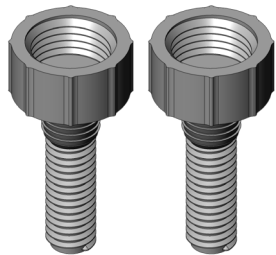
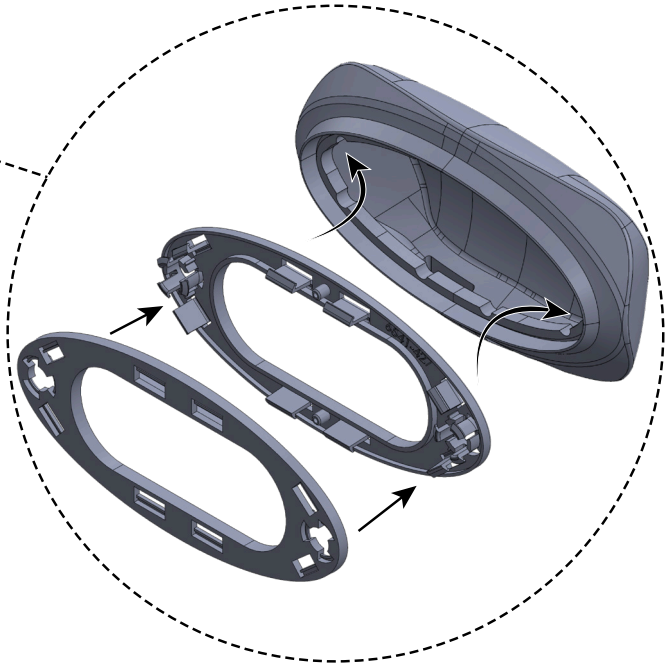
# Parts & Tools Needed

## Included in Kit



1x Pre-Assembled Pillow

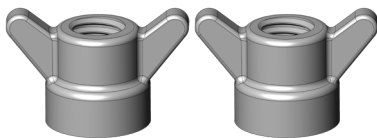
Pillow assembly consists of foam pillow (6455-036), inner ring (6541-427) inserted into pillow, and outer ring (6541-428) attached to back of inner ring.



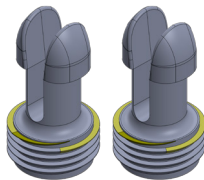
2x Threaded Studs  
(6541-429)



2x Gaskets  
(6541-432)



2x Wing Nut  
(6540-547)



2x Snaps  
(6541-430)

## NOT Included in Kit

1. A sharp knife to cut the paper backing behind the spa shell where the pillow attaches.
2. Scraper or other digging tool to remove insulating foam from back of spa shell. Necessary to gain access to the nuts that hold the old pillow in place.

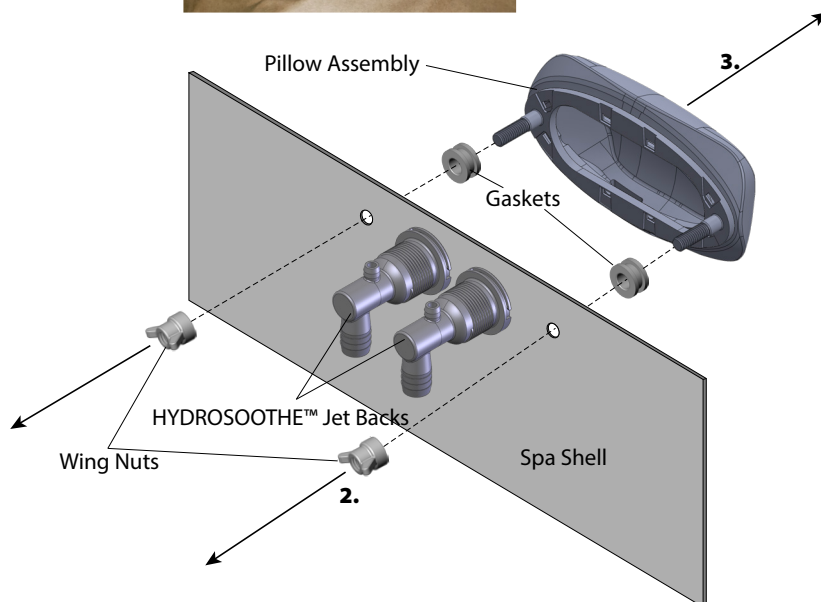


## Removing Old Style Pillow

**CAUTION:** The original HYDROSOOTHE™ pillows were NOT able to be removed from the front of the spa. You will need to access the nuts at the back of the spa shell BEFORE pulling the pillow from the front of the shell.

If your spa already has a front removable pillow installed, skip this section and go to step 3 of “Installing New Pillow & Hardware” below.

1. Remove spa cabinet behind HYDROSOOTHE™ Pillow, and locate the area marked as the service area. Use your knife to cut away the paper from this region, then use your scraper or digging tool to remove the insulating foam covering the wing nuts that hold the pillow in place.
2. Unscrew the wing nuts from the pillow mounting posts sticking through the back of the spa shell. There will be one on each side of the pair of HYDROSOOTHE™ jet backs. If you are having trouble finding the wing nuts, use the jets as a reference point.
3. Pull the entire pillow assembly away from the front of the spa shell. Make sure to take the existing gaskets with the pillow. The old gaskets are not compatible with the new pillow mounting system.



## Installing New Pillow & Hardware

For spas that already have a front removable pillow installed, skip to step 3.

1. Insert the threaded studs through the gasket and then through the spa shell.
2. Thread the wing nuts onto the studs from the back of the spa shell. Tighten firmly by hand.
3. Thread the pillow snaps into the front side of the threaded studs. Tighten firmly by hand.
4. Line up the holes in the ends of the pillow mounting ring with the snaps. Press pillow into place. This may require a decent amount of pressure.

To remove the pillow for future replacement or to access the HYDROSOOTHE™ Jets, simply grab the pillow from underneath and pry away from the shell.

